

If you need this information in your language, please contact us using one of the methods below.

“જો તમારે આ માહિતીની તમારી પોતાની ભાષામાં જરૂર હોય, તો નીચેની પદ્ધતિઓમાંથી એકનો ઉપયોગ કરીને અભિયંત્રિત સંપર્ક સાધો.”

如果您需要您自己语言的此信息，请通过以下方法之一与委员会联系。

“ਜੇ ਇਹ ਜਾਣਕਾਰੀ ਤੁਹਾਨੂੰ ਆਪਣੀ ਭਾਸ਼ਾ ਵਿਚ ਚਾਹੀਦੀ ਹੋਵੇ, ਤਾਂ ਕਿਰਪਾ ਕਰਕੇ ਹੇਠ ਲਿਖਿਆਂ ਵਿੱਚੋਂ ਕਿਸੇ ਇੱਕ ਤਰੀਕੇ ਦੀ ਵਰਤੋਂ ਕਰਦੇ ਹੋਏ ਕੋਸ਼ਲ ਨਾਲ ਸੰਪਰਕ ਕਰੋ।”

آگر آپ نے مطلوبہ معلومات اپنی زبان میں چاہتے ہیں تو براہ کرم ذیل سے کسی طریقوں میں کسی ایک کا استعمال کرتے ہوئے ہم سے رابطہ کیجئے۔

0845 907 2244

communications@erewash.gov.uk

Ilkeston Town Hall, Wharnccliffe Road, Ilkeston, Derbyshire DE7 5RP  
Long Eaton Town Hall, Derby Road, Long Eaton, Derbyshire NG10 1HU



EREWASH



# Cockroaches



## Description

There are two types of cockroaches commonly found in the U.K. Both are quite large insects varying in size from 10mm (½”) to 24mm (1”).

Contact Details:  
Paul Smith  
Environmental Protection and  
Housing Renewal Team Leader  
Website: [www.erewash.gov.uk](http://www.erewash.gov.uk)  
Phone: 0115 931 6010



## Description

The two types of cockroaches are:

### Oriental

This is the larger of the two 20 to 24mm long and dark brown in colour with whip-like antennae.



### German

This is 10 to 15mm long, yellowish brown in colour with two dark marks on the thorax.



## Distribution

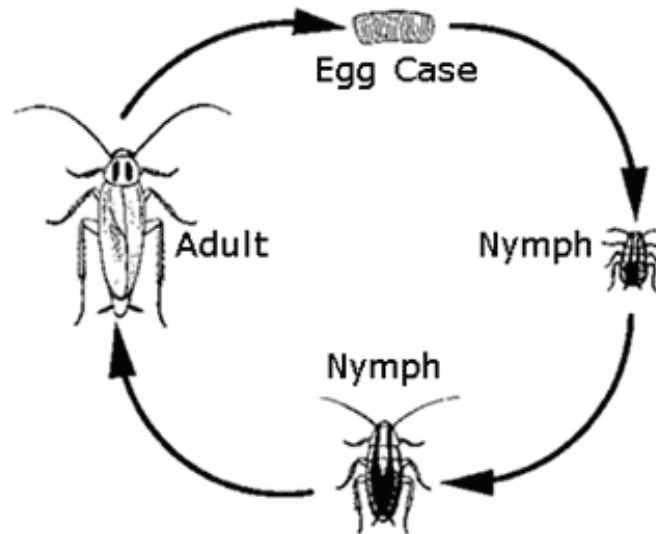
Cockroaches can be found in all types of buildings including blocks of flats and industrial premises, particularly kitchens.

They are nocturnal and are often only seen at night. During the day they hide in cracks / crevices and behind cookers, fridges etc.

## Life Cycle

Cockroaches produce eggs in capsules. The Oriental cockroach egg capsule is about 12mm (½ ") long and can contain up to sixteen eggs which will hatch between six and twelve weeks after laying.

The German cockroach egg capsule is only half the length of the Oriental but contains up to thirty eggs.



## Why are cockroaches important?

Cockroaches will feed on almost anything and are often found associated with drains. They are liable to contaminate foodstuffs with their droppings and also via dirt carried on their bodies. Potentially they can transmit dysentery, gastro enteritis, typhoid and food poisoning infections.

## Prevention

Good hygiene denying the insects access to food is essential. The maintenance of your property, ensuring that all cracks/crevices are filled, will deny the insects access.

## Treatment

Insecticides available over the counter are not particular effective against cockroaches. You should seek help from a professional pest control company at the first sign of an infestation. Details of such companies may be found in telephone directories and similar publications.