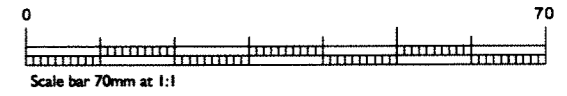


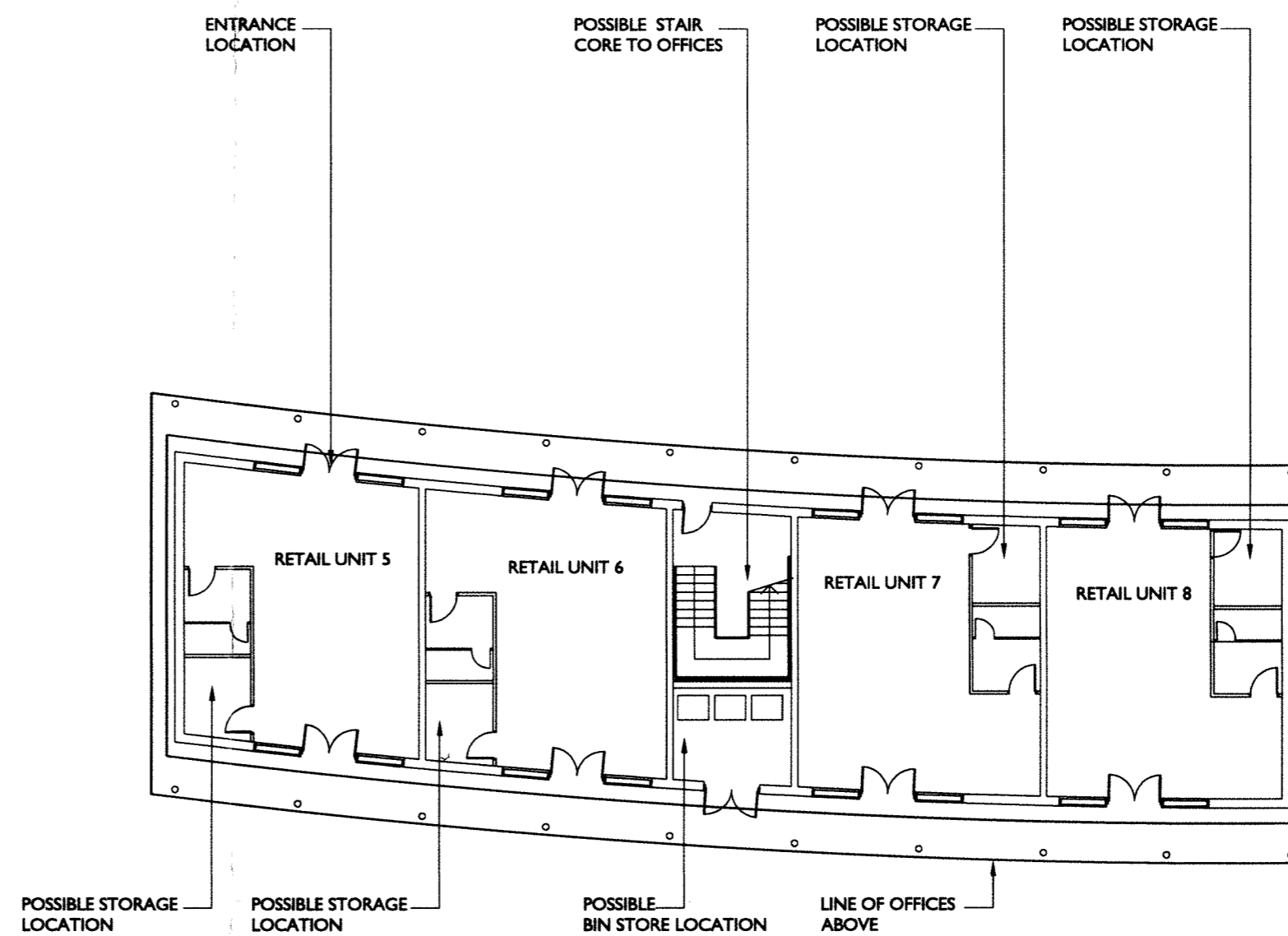
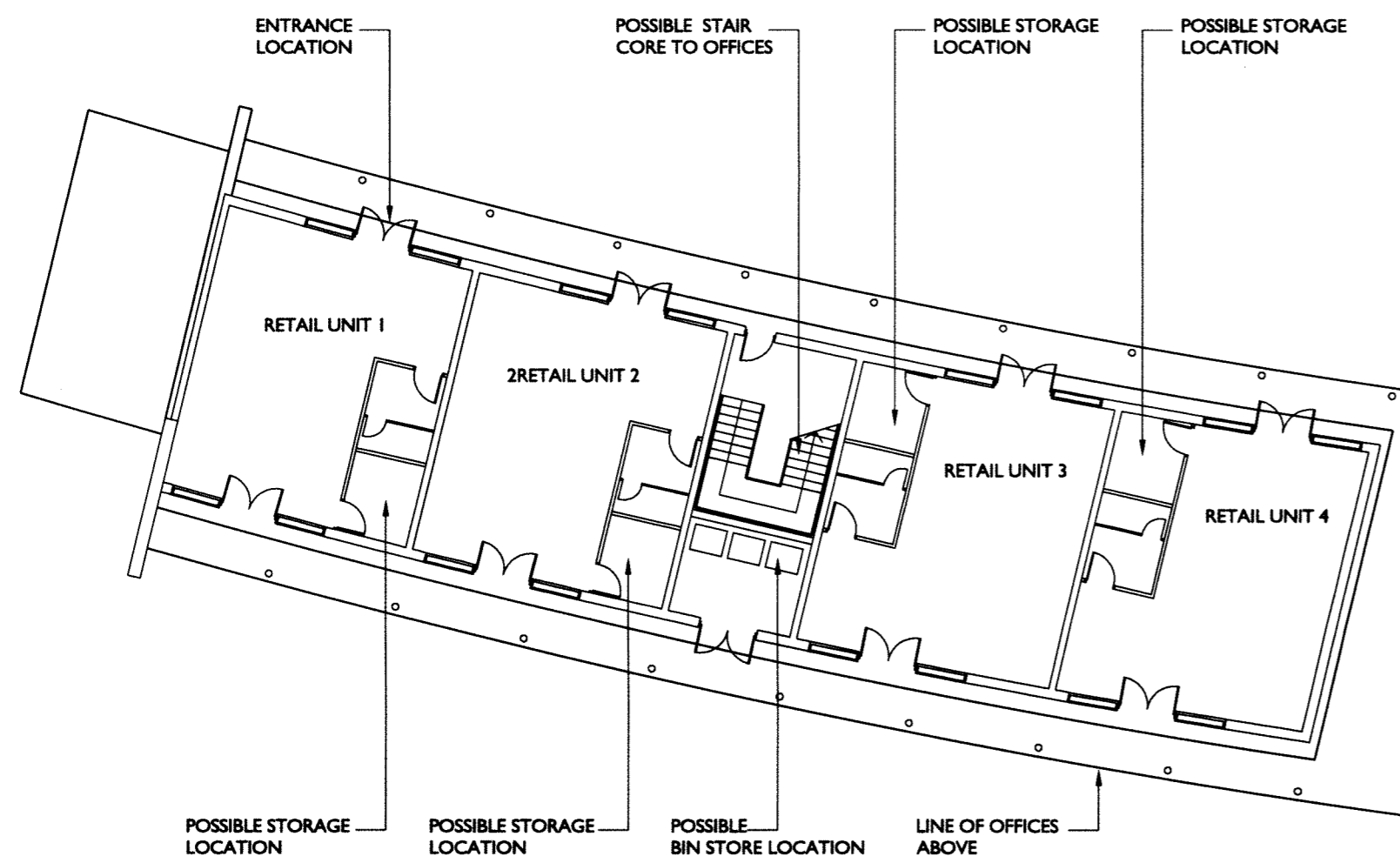
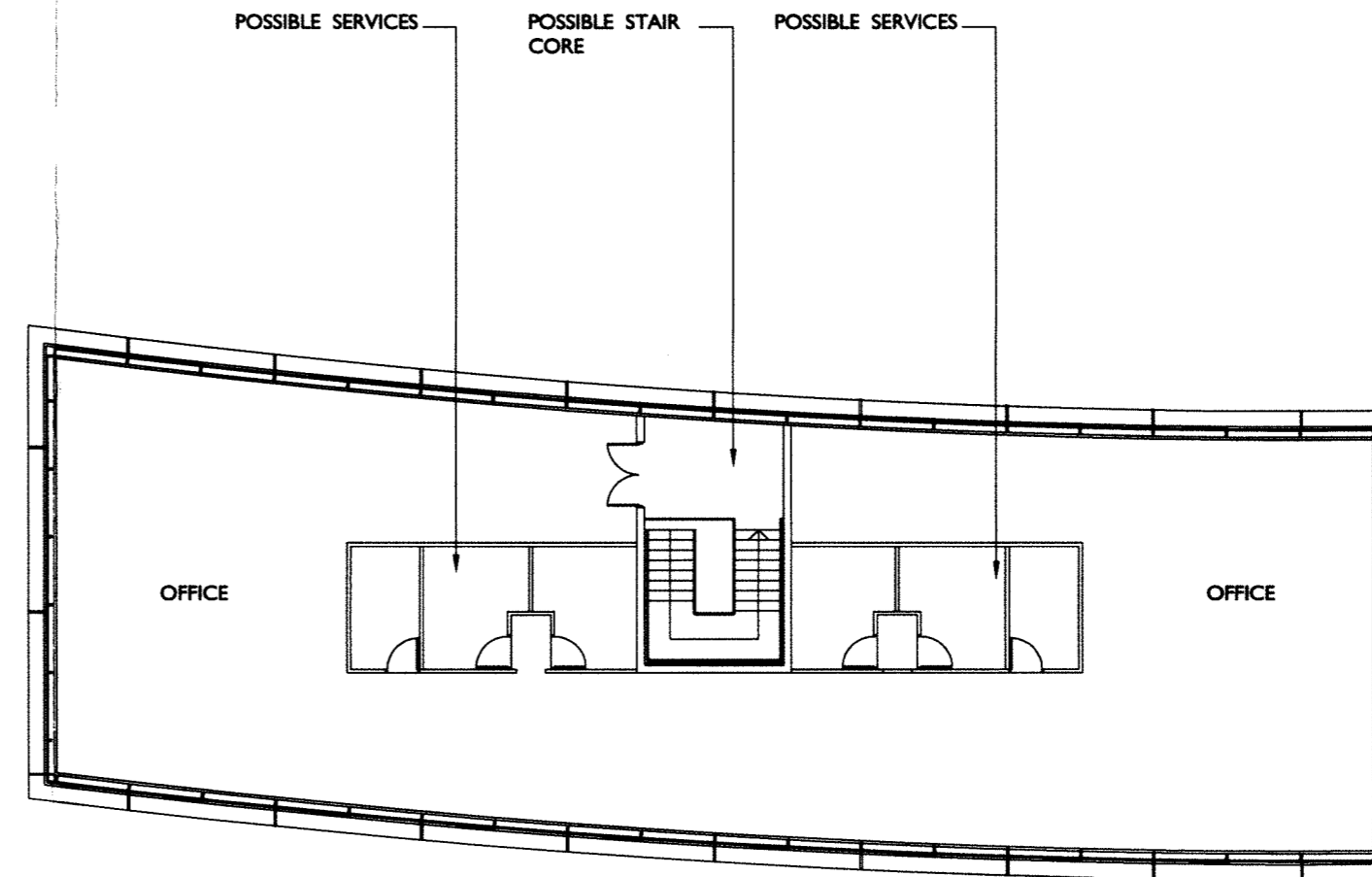
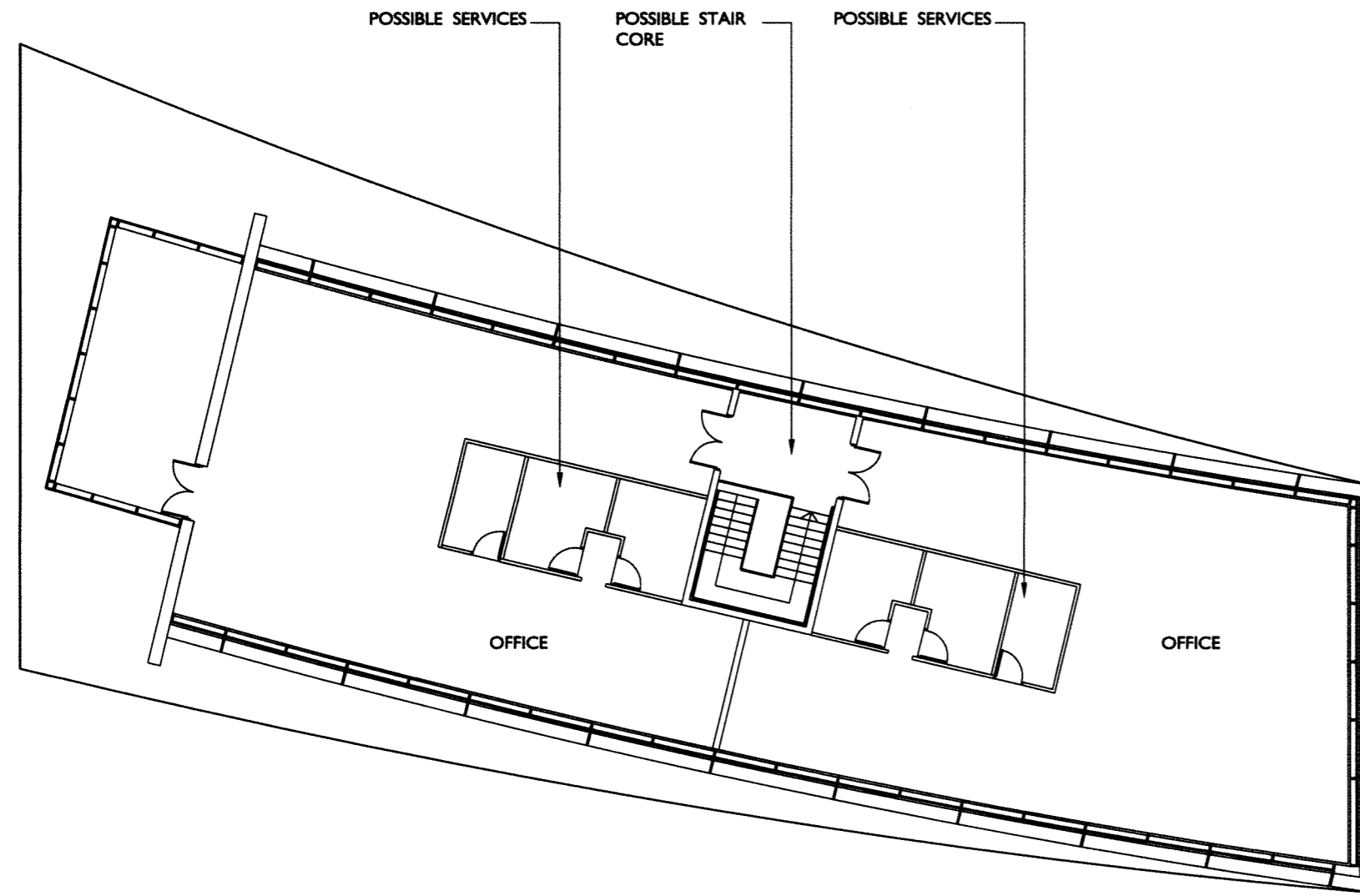
ERE/1109/022

NOTES

This drawing to be read in accordance with the specification/Bills of Quantities and related drawings. No Dimensions to be scaled from this drawing. All stated dimensions to be verified on site and the Architect notified of any discrepancies.



NOTES
 LANDSCAPING IS INDICATIVE ONLY. REFER TO ASPECT LANDSCAPE MASTERPLAN FOR DETAILS
 HIGHWAYS ARRANGEMENT TO BE AGREED BETWEEN LOCAL AUTHORITY AND HIGHWAYS CONSULTANT
 SITE LEVELS SUBJECT TO CONFIRMATION AND TO BE READ IN CONJUNCTION WITH THE TOPOGRAPHICAL SURVEY
 PROVISIONAL LEVELS SUBJECT TO FINAL DESIGN BY ENGINEERS AND AGREEMENT WITH TESCO
 LEVELS TO BE CONFIRMED FOLLOWING A TOPOGRAPHICAL SURVEY. LEVELS TO BE CONFIRMED BY STRUCTURAL ENGINEER
 A REVISED TOPOGRAPHICAL SURVEY IS TO BE PRODUCED ONCE THE SITE IS CLEARED AND LEVELED AND GROUNDWORK IS COMPLETE
 LIBRARY DESIGNED BASED ON APPROVED CROUCH & BUTLER SCHEME
 RETAIL PLAN BASED ON INFORMATION PROVIDED BY TESCO STORE LTD.



PLANNING
 13 NOV 2009
EBC

REV.	DATE	NOTE	IN

Project
**PROPOSED MIXED USE DEVELOPMENT
 STATION ROAD
 SANDIACRE DERBYSHIRE**

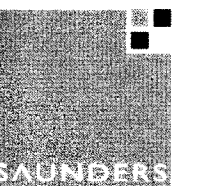
Title
RETAIL PLAN

Scale 1:200 @A2 Date 12.11.09

Drawn EP Checked PKM

Drawing Number 6523 -P205 Revision -

Saunders Partnership Architects
 Studio Four
 37 Broadwater Road
 Welwyn Garden City
 Hertfordshire, AL7 3AX
 T 01707 385300 F 0870 6222135
 www.saundersarchitects.com
 offices at
 Welwyn Garden City | Bristol | Manchester



VALIDATED
 19 NOV 2009
EBC